

CJBEW Cast Junction Boxes Explosionproof, Dust-Ignitionproof

Features	4
Selection Table	6
Options and Accessories	7
Dimensions	8
Drilling & Tapping Guidelines	8
Drill & Tap Schedule	9

CJBEW Series: Explosionproof, Dust-Ignitionproof

Class I, Div. 1 & 2 Groups B \emptyset , C \emptyset , D
 Class II, Div. 1 & 2 Groups E, F, G
 Class III NEMA 4, 7BCD, 9EFG

Applications

- Explosionproof junction boxes are used where hazardous materials are handled or stored. These enclosures may be used to house control stations, starters, breakers, relays, meters, terminals for splicing wires, pull boxes, bus boxes or custom panels.

Features

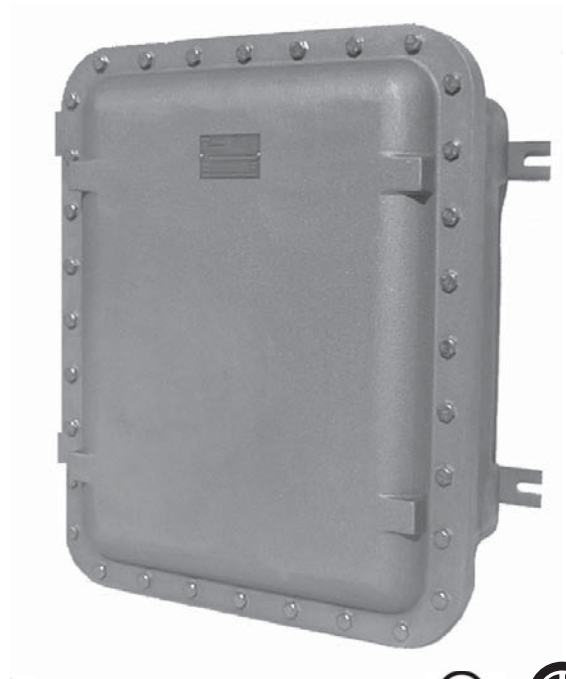
- Sand cast copper-free aluminum.
- Precision machined flame path between box and cover.
- Bolt on stainless steel slotted mounting feet for horizontal or vertical mounting.
- Flexible hinge mounting either left or right side. **Hinges standard on sizes 121206 & larger.**
- External flange maximizes internal space.
- Wall thickness suitable for minimum of five full threads.
- Drilled and tapped for mounting pan.
- Wide range of drilled and tapped outlets.
- Ground lug package and installation instructions for termination of ground wires enclosed.
- O-ring gasket insures watertight integrity.

Standard Materials

- Bodies and covers: Copper-free aluminum
- Cover bolts: Stainless steel
- O-Ring: Neoprene
- Hinges: Stainless Steel

Standard Finishes

- Bodies and covers: Shot blast finish standard



Options

- Grey epoxy powder coat available to provide NEMA 4X rating. (-G2 Suffix)
- Drilling and Tapping

Compliances

- UL Listed - Standard 886 and 1064
- CSA Certified - Standard C22.2, No. 30

CJBEW Series Selection Table

Catalog Number	Overall Dimensions			Mounting Dimensions				Inside Dimensions					Max. Conduit Size (In)	Ship Wt. (lbs)	Mtg. Hrdw. Cat. No.
	F	E	G	A	A*	B	B*	W	H	Db	Dc	K			
CJBEW040604	7.13	9.13	6.13	N/A	6.75	N/A	2.13	4.00	6.00	3.75	0.75	2.50	1.50	20	CMH2
CJBEW050903	8.94	13.50	6.13	4.00	N/A	11.00	N/A	5.06	9.50	3.50	1.13	2.00	1.50	20	CMH2
CJBEW060604	9.63	9.33	6.25	N/A	8.75	N/A	12.13	6.00	6.00	4.00	0.75	2.38	2.00	20	CMH2
CJBEW060804	10.40	12.40	6.50	4.50	9.13	10.56	4.50	6.00	8.00	3.75	0.75	2.50	2.00	20	CMH2
CJBEW060806	10.40	12.50	8.13	N/A	9.38	N/A	4.50	6.00	8.00	5.75	0.75	2.38	2.00	20	CMH2
CJBEW061004	10.63	15.25	6.75	5.50	N/A	13.13	N/A	6.13	10.75	3.81	1.44	2.00	2.00	27	CMH2
CJBEW061204	10.63	16.63	6.38	N/A	9.13	N/A	8.50	6.13	12.13	4.06	1.00	2.25	2.00	25	CMH2
CJBEW061604	11.00	20.50	6.88	6.00	N/A	18.00	N/A	6.50	16.00	4.13	1.38	2.31	2.00	32	CMH2
CJBEW071106	12.25	15.88	10.00	6.38	N/A	13.50	N/A	7.38	11.38	5.88	2.50	3.38	2.00	35	CMH2
CJBEW080806	12.25	12.25	8.25	4.50	10.75	10.75	4.50	8.00	8.00	5.75	0.75	3.25	2.00	30	CMH2
CJBEW081006	12.50	14.50	8.50	7.00	10.75	12.50	6.50	8.00	10.00	5.75	0.75	3.50	2.00	36	CMH2
CJBEW081307	12.50	17.44	10.38	N/A	10.00	N/A	8.50	8.00	13.06	3.50	3.50	2.75	2.00	30	CMH2
CJBEW091105	13.88	15.50	8.69	7.25	11.82	13.13	8.56	9.38	11.13	4.81	1.88	3.25	2.00	22	CMH2
CJBEW091504	14.25	20.44	8.50	7.25	11.81	17.88	13.31	9.50	15.56	4.75	1.75	3.00	2.00	33	CMH2
CJBEW101006	14.81	14.81	9.13	6.50	10.78	13.00	4.50	10.25	10.25	5.75	1.50	3.38	2.00	44	CMH2
CJBEW101406	14.50	18.50	8.44	7.00	13.00	16.63	10.63	10.00	14.00	5.88	0.75	3.13	2.00	55	CMH4
CJBEW101408	14.50	18.50	9.63	N/A	13.00	N/A	10.63	10.00	14.00	7.75	0.75	4.44	4.00	60	CMH2
CJBEW112005	16.38	25.13	7.50	10.25	14.50	22.63	16.88	11.38	20.00	4.88	1.50	3.50	3.00	85	CMH2
CJBEW112406	15.75	29.38	10.19	8.50	14.13	27.13	20.00	10.75	24.38	6.00	1.63	4.00	3.00	72	CMH8
CJBEW113006	16.38	35.00	10.25	9.50	15.13	32.88	27.25	11.25	29.88	6.19	1.88	4.19	3.00	113	CMH8
CJBEW121206	17.38	17.38	9.25	8.63	15.63	15.63	8.63	12.25	12.25	5.75	1.50	3.75	3.00	65	CMH8
CJBEW121208	17.38	17.38	11.50	8.63	15.63	15.63	8.63	12.25	12.25	7.75	1.50	4.75	3.50	70	CMH8
CJBEW121806	17.00	23.00	9.13	7.00	15.75	21.00	14.13	12.25	18.25	5.75	1.50	3.50	4.00	90	CMH5
CJBEW121808	17.00	23.00	11.13	7.00	15.75	21.00	14.13	12.25	18.25	8.75	1.50	4.25	4.00	101	CMH5
CJBEW122408	16.75	28.75	11.13	N/A	15.75	N/A	18.38	12.00	24.00	7.75	1.00	4.25	4.00	138	CMH4
CJBEW123608	16.75	40.75	11.88	N/A	15.75	N/A	29.00	12.00	36.00	7.75	1.50	4.56	4.00	218	CMH5
CJBEW133806	18.00	42.50	10.44	16.13	11.88	40.75	33.75	13.63	37.88	6.13	1.50	4.31	3.50	190	CMH8
CJBEW141406	19.38	19.38	9.56	9.75	17.75	17.75	9.75	14.75	14.75	5.75	1.38	3.88	3.50	98	CMH8
CJBEW141408	19.38	19.38	11.56	9.75	17.75	17.75	9.75	14.75	14.75	7.75	1.38	4.00	3.00	105	CMH8
CJBEW142408	19.63	29.00	12.00	13.13	N/A	27.50	N/A	14.88	24.25	8.00	1.50	4.00	4.00	131	CMH6
CJBEW153707	21.25	43.00	12.06	13.75	20.00	41.63	32.00	15.63	37.25	7.44	1.50	5.25	4.00	250	CMH8
CJBEW161606	21.00	21.00	9.81	11.00	19.75	19.75	11.00	16.50	16.50	5.75	1.50	3.88	3.50	132	CMH8
CJBEW161608	21.00	21.00	12.39	11.00	19.75	19.75	11.00	16.50	16.50	8.38	1.50	4.88	4.00	140	CMH8
CJBEW161812	21.38	23.38	15.06	12.00	19.00	21.00	14.00	16.25	18.25	11.88	0.38	7.00	4.00	150	CMH8
CJBEW162206	21.50	27.31	9.06	13.00	19.88	25.25	15.50	16.44	22.50	5.75	1.25	3.31	3.00	130	CMH8
CJBEW162408	21.00	28.00	12.13	N/A	19.75	N/A	18.38	16.25	24.25	8.25	1.50	5.31	4.00	180	CMH6
CJBEW162806	20.75	32.75	8.63	13.00	N/A	30.75	N/A	16.25	28.25	5.75	1.50	3.13	3.00	150	CMH5
CJBEW181806	23.38	23.38	9.94	13.00	21.75	21.75	13.00	18.25	18.25	5.75	1.50	4.13	3.50	188	CMH8
CJBEW181808	23.38	23.38	11.94	13.00	21.75	21.75	13.00	18.25	18.25	7.75	1.50	4.50	4.00	198	CMH8
CJBEW182408	23.94	30.00	12.18	16.13	21.75	27.75	18.38	18.25	24.19	7.75	1.50	5.06	4.00	224	CMH8
CJBEW182410	23.94	30.00	14.18	16.13	21.75	27.75	18.38	18.25	24.19	9.75	1.50	5.75	4.00	235	CMH8
CJBEW183008	22.63	34.63	12.13	N/A	21.75	N/A	23.00	18.25	30.25	7.75	1.50	4.75	4.00	265	CMH5
CJBEW183608	23.50	41.75	12.31	11.00	21.75	39.50	29.00	18.25	36.50	7.75	1.50	4.75	4.00	250	CMH8
CJBEW183610	23.50	41.75	14.31	11.00	21.75	39.50	29.00	18.25	36.50	9.75	1.50	5.50	4.00	270	CMH8
CJBEW184207	23.88	47.88	11.88	16.00	23.00	45.38	38.38	18.63	42.25	7.00	1.50	5.00	4.00	310	CMH8
CJBEW205610	26.00	56.00	17.63	N/A	21.56	N/A	38.63	20.00	56.00	5.00	5.00	4.50	4.00	530	CMH8
CJBEW206008	25.00	65.00	12.75	N/A	23.50	N/A	50.00	20.00	60.00	6.88	1.50	4.75	4.00	521	CMH5
CJBEW242408	29.38	29.38	12.31	18.38	28.00	28.00	18.38	24.50	24.50	7.75	1.50	5.00	4.00	225	CMH8
CJBEW242410	29.38	29.38	14.31	18.38	28.00	28.00	18.38	24.50	24.50	9.75	1.50	6.13	4.00	240	CMH8
CJBEW243008	29.00	35.00	13.00	18.00	28.00	34.00	23.00	24.00	30.00	8.00	1.94	5.25	4.00	420	CMH8
CJBEW243608	30.75	43.00	13.06	18.25	28.00	40.00	29.00	24.25	36.25	7.75	1.63	5.13	4.00	420	CMH5
CJBEW243610	30.75	43.00	15.06	18.25	28.00	40.00	29.00	24.25	36.25	9.75	1.63	6.00	4.00	450	CMH5
CJBEW303808	36.00	44.00	13.75	N/A	35.00	N/A	29.00	30.00	38.00	7.75	2.00	6.13	4.00	600	CMH6
CJBEW303816	36.00	44.00	20.06	N/A	35.00	N/A	29.00	30.00	38.00	15.50	7.75	6.13	4.00	800	CMH6

Note: Dimensions (in inches) are nominal.

◇ For Groups B and C, all conduits must be sealed within 2" of the enclosure.

Refer to page 8 for Dimensional Drawings and page 9 for Drill and Tap schedule to accompany order.

CJBEW Series

Options and Accessories

Options

Factory Installed Suffix	Field Installed Catalog Number	Description
AB	N/A	Set of 4 standoffs 1/2" high
BR	BRTB4X	Breather, NEMA 4X (includes outlets & installation)
DN	DRNB4X	Drain, NEMA 4X (includes outlets & installation)
EGS	N/A	External grounding stud 3/8"-16
G1	N/A	Grey Powder Coat Epoxy (outside)
G2	N/A	Grey Powder Coat Epoxy (inside & outside)
H	CHOF12SS	Hinge Kit, 2 light duty SS hinges
	CHOF22SS	Hinge Kit, 2 heavy duty SS hinges
	CHOF23SS	Hinge Kit, 3 heavy duty SS hinges
K	N/A	Terminal blocks 600V, 20A (indicate # of points) (ex: 5 points=5K)
NP	N/A	Plastic nameplate, 2" x 4", 1/8" black letters on white surface, 3 lines max, specify legend.
Q	N/A	SS captive Quad-Lead bolts
Z	See below	Mounting pan

Mounting Hardware†

Catalog Number	Description
CMH1	1/4" - 20 X 1 1/4" Bolt, 1/4" - 20 Hex Nut, 1/4" Washers
CMH2	3/8" - 16 X 1-1/4" Bolt, 3/8" - 16 Hex Nut, 3/8" Washers
CMH3	7/16" - 14 X 1 3/4" Bolt, 7/16" - 14 Hex Nut, 7/16" Washers
CMH4	1/2" - 13 X 1 3/4" Bolt, 1/2" - 13 Hex Nut, 1/2" Washers
CMH5	1/2" - 13 X 2" Bolt, 1/2" - 13 Hex Nut, 1/2" Washers
CMH6	5/8" - 11 X 2" Bolt, 5/8" - 11 Hex Nut, 5/8" Washers
CMH7	1/2" - 13 X 1 1/2" Bolt, 1/2" - 13 Hex Nut, 1/2" Washers
CMH8	5/8" - 11 X 1 1/4" Bolt, 5/8" - 11 Hex Nut, 5/8" Washers

† Refer to previous page for Enclosure-Mounting Hardware Correlation.

Drill & Tap Options (For Drill and Tap schedule, refer to page 9)

Symbol	Conduit Size (NPT)	Symbol	Conduit Size (NPT)
A	1/2"	F	2"
B	3/4"	G	2 1/2"
C	1"	H	3"
D	1 1/4"	J	3 1/2"
E	1 1/2"	K	4"

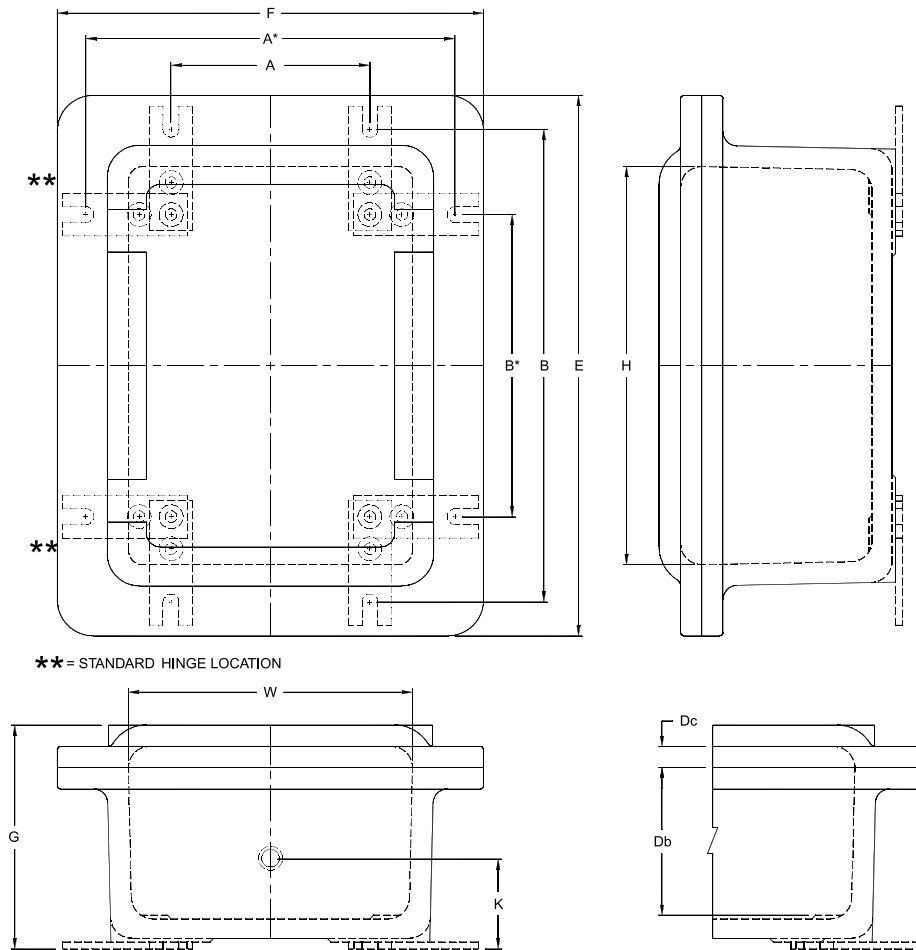
Suffix	Blind Tapped Holes	Screw Size
BT1		#6 - 1/4"
BT2		5/16" - 1/2"

Mounting Pan Catalog #	Junction Box Catalog #	Overall Dimensions W	Overall Dimensions H	Mounting Pan Catalog #	Junction Box Catalog #	Overall Dimensions W	Overall Dimensions H	Mounting Pan Catalog #	Junction Box Catalog #	Overall Dimensions W	Overall Dimensions H
CZ-464	CJBEW040604	3.00	5.00	CZ-11246	CJBEW112406	9.88	23.25	CZ-16286	CJBEW162806	14.00	26.00
CZ-664	CJBEW060604	4.75	4.75	CZ-11306	CJBEW113006	9.88	28.50	CZ-18186/8	CJBEW181806	16.00	16.00
CZ-686	CJBEW060806	4.50	6.50	CZ-12126/8	CJBEW121206	10.50	10.50	CZ-18186/8	CJBEW181808	16.00	16.00
CZ-593	CJBEW050903	4.00	8.50	CZ-12126/8	CJBEW121208	10.50	10.50	CZ-18248/10	CJBEW182408	16.00	22.00
CZ-684	CJBEW060804	4.50	6.50	CZ-12186/8	CJBEW121806	10.50	16.50	CZ-18248/10	CJBEW182410	16.00	22.00
CZ-6104	CJBEW061004	5.00	10.00	CZ-12186/8	CJBEW121808	10.50	16.50	CZ-18308	CJBEW183008	16.00	28.00
CZ-6124	CJBEW061204	5.50	11.00	CZ-12248/10	CJBEW122408	10.75	22.63	CZ-18368/10	CJBEW183608	17.00	34.75
CZ-6164	CJBEW061604	5.25	15.00	CZ-12368	CJBEW123608	10.00	34.00	CZ-18368/10	CJBEW183610	17.00	34.75
CZ-7116	CJBEW071106	6.50	10.00	CZ-13386	CJBEW133806	11.50	36.38	CZ-18427	CJBEW184207	17.00	40.00
CZ-886	CJBEW080806	6.50	6.50	CZ-14146/8	CJBEW141406	12.25	12.25	CZ-205610	CJBEW205610	17.00	54.00
CZ-8106	CJBEW081006	6.50	8.50	CZ-14146/8	CJBEW141408	12.25	12.25	CZ-20608	CJBEW206008	18.00	57.50
CZ-8137	CJBEW081307	6.00	11.00	CZ-14248	CJBEW142408	14.00	22.38	CZ-24248/10	CJBEW242408	22.00	22.00
CZ-9115	CJBEW091105	8.25	10.00	CZ-15377	CJBEW153707	14.50	35.50	CZ-24248/10	CJBEW242410	22.00	22.00
CZ-9154	CJBEW091504	8.13	14.75	CZ-16166/8	CJBEW161606	15.00	15.00	CZ-24308	CJBEW243008	22.50	28.00
CZ-10104/6	CJBEW101006	7.50	7.50	CZ-16166/8	CJBEW161608	15.00	15.00	CZ-24368/10	CJBEW243608	22.00	34.00
CZ-10146/8	CJBEW101408	9.00	13.00	CZ-161812	CJBEW161812	15.00	16.00	CZ-24368/10	CJBEW243610	22.00	34.00
CZ-10146/8	CJBEW101408	9.00	13.00	CZ-16226	CJBEW162206	14.00	20.00	CZ-30388	CJBEW303808	28.00	36.00
CZ-11205	CJBEW112005	10.50	19.00	CZ-16248	CJBEW162408	14.75	22.75	CZ-30388	CJBEW303816	28.00	36.00

Note: Dimensions (in inches) are nominal.

CJBEW Series

Dimensions and Drilling & Tapping Guidelines



Drilling and Tapping Guidelines

Conduit Size (NPT)	Minimum Spacing For Conduit Centers (Inches)									
	½	¾	1	1¼	1½	2	2½	3	3½	4
½	2.13	2.13	2.25	2.63	2.81	3.13	3.63	4.00	4.25	4.50
¾	2.13	2.13	2.25	2.63	2.81	3.13	3.63	4.00	4.25	4.50
1	2.25	2.25	2.38	2.81	3.00	3.25	3.75	4.13	4.50	4.88
1¼	2.63	2.63	2.81	3.13	3.31	3.63	4.13	4.50	4.75	5.00
1½	2.81	2.81	3.00	3.31	3.50	3.81	4.31	4.63	4.94	5.25
2	3.13	3.13	3.25	3.63	3.81	4.13	4.63	5.00	5.38	5.75
2½	3.63	3.63	3.75	4.13	4.31	4.63	5.13	5.31	5.75	6.13
3	4.00	4.00	4.13	4.50	4.63	5.00	5.31	5.75	6.00	6.25
3½	4.25	4.25	4.50	4.75	4.94	5.38	5.75	6.00	6.25	6.50
4	4.50	4.50	4.88	5.00	5.25	5.75	6.13	6.25	6.50	6.75

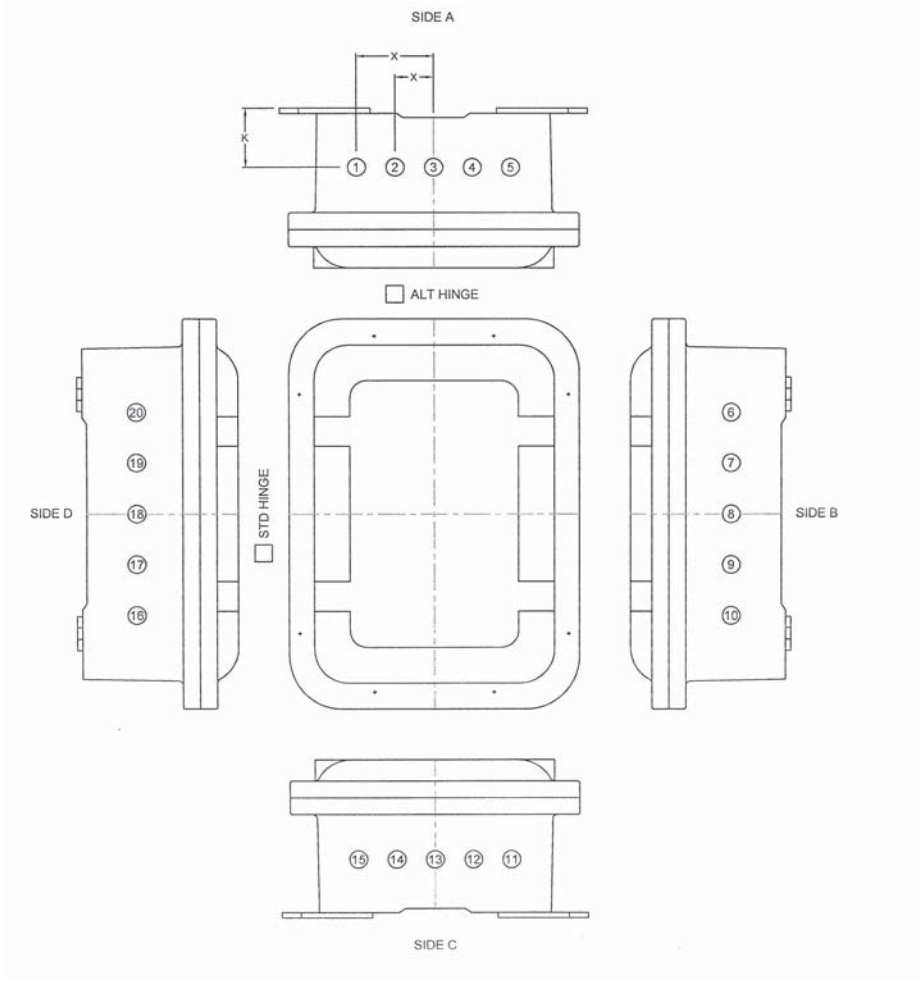
Note: Dimensions (in inches) are nominal.

CJBEW Series

Drill and Tap Schedule

For factory installed conduit entries, complete this schedule and fax with your purchase order.

CHECK ONLY IF SHOP IS TO LOCATE.			
<input type="checkbox"/> Drain Only, Side _____			
<input type="checkbox"/> Breather/Drain Sides _____ & _____			
Position	Conduit Size	Dimension "X"	Dimension "K"
1			
2			
3 CL			
4			
5			
6			
7			
8 CL			
9			
10			
11			
12			
13 CL			
14			
15			
16			
17			
18 CL			
19			
20			



Check List

- Assign Drawing number
- Select correct Figure number
- If breather and drain are required, are they clearly marked at desired positions or is box checked?
- Indicate conduit sizes within the catalog published maximum on page 6.
- Check for minimum spacing between conduit to conduit per Drilling and Tapping Guidelines table on previous page.
- For CCSEW cover layout, submit separate drawing and allow min. 2½" spacing between consecutive ¾ - 14 NPS openings in cover.
- Sign name to drawing. Name _____ Date _____

Catalog Number	Dwg No.
----------------	---------